



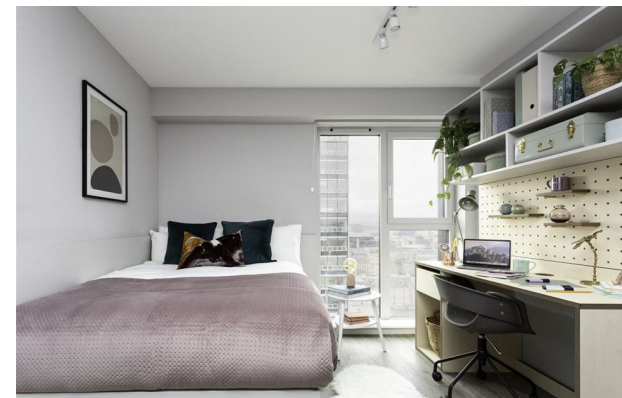
Cathedral Street | | Glasgow | BN2 4GA

£285 Per week



Cathedral Street |
Glasgow | BN2 4GA
£285 Per week

BRIDLE WORKS | STUDENT | SEPTEMBER |



- Karaoke Room
- Private Dining
- Cinema Room
- Communal Lounge
- Bike Storage
- Gym
- Rooftop Terrace
- Study Area
- Communal TV
- Games Area

Energy Efficiency Rating		
	Current	Potential
<i>Very energy efficient - lower running costs</i>		
(92 plus) A		
(81-91) B		
(69-80) C		
(55-68) D		
(39-54) E		
(21-38) F		
(1-20) G		
<i>Not energy efficient - higher running costs</i>		
England & Wales	EU Directive 2002/91/EC	

Lower Ground Floor
27 Ridley Place
Newcastle upon Tyne
Tyne and Wear
NE1 8JN
0191 6403450
info@propertybynest.co.uk